

# Excavator attachments

Demolition, recycling and earth-moving.  
Experience our Hydraulic Attachment Tools.



PART OF THE ATLAS COPCO GROUP



# A crush at work

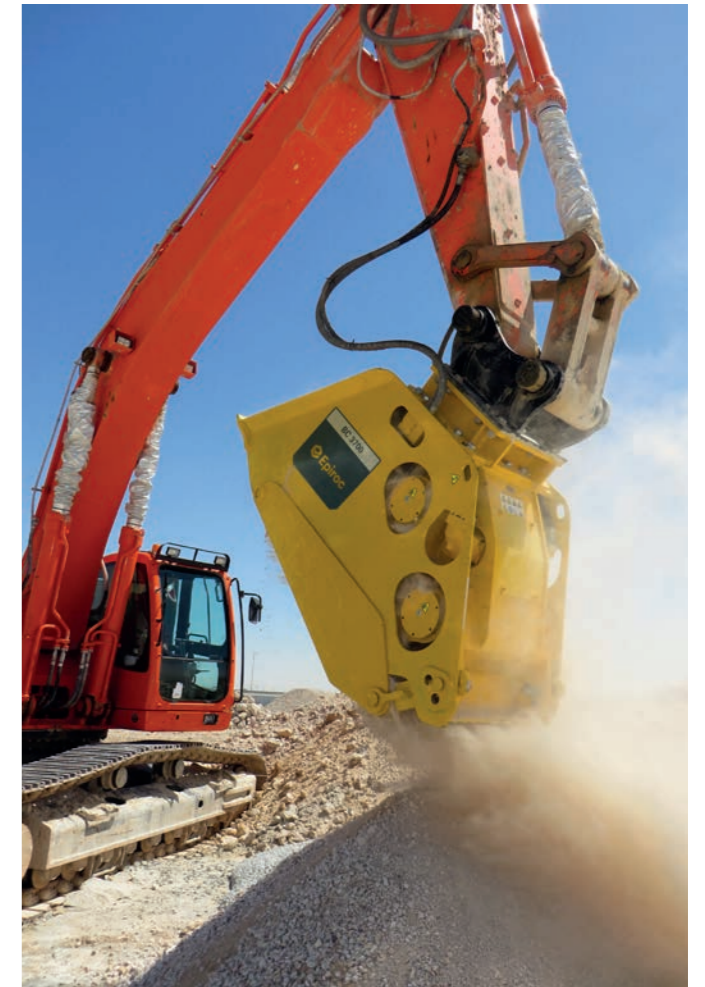
Our Bucket Crushers make easy work of concrete debris, rubble, masonry, asphalt, natural stone and rock by crushing the material on site.

The internal **timing belt transmission**, driven by **two powerful hydraulic motors**, has a narrower design and enables a reversible running direction to remove jammed material.

**Quick grain size adjustment** without special tools thanks to an intuitive system.

To increase throughput, a **moving sliding plate** continuously guides material to the crushing jaw.

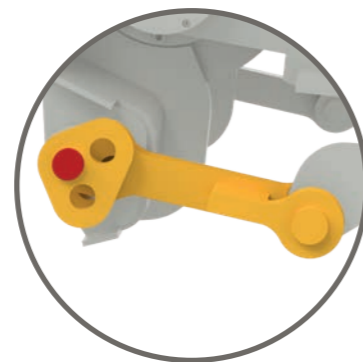
**Crushing jaw plates** can be easily replaced on-site.



Our Bucket Crushers combine low maintenance and high performance. On-site crushing also means less transportation and dumpsite costs.



**BC 2100**  
Grain sizes 20/40/60/90 mm



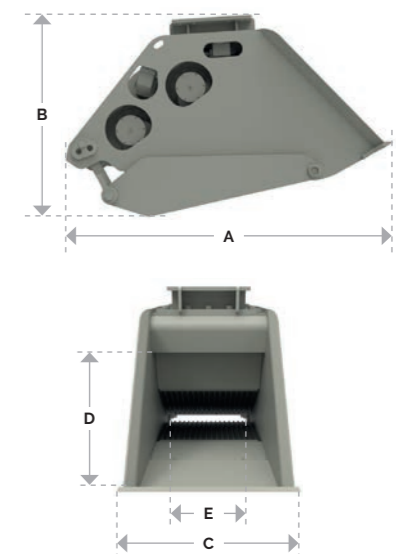
**BC 2500/BC 3700/BC 5300**  
Grain sizes 20/45/70/95/125/150 mm

BC range		BC 2100 <sup>3)</sup>	BC 2500 <sup>3)</sup>	BC 3700 <sup>3)</sup>	BC 5300 <sup>3)</sup>
Carrier weight class <sup>1)</sup>	t	18 – 28	22 – 30	28 – 38	35 – 54
Service weight <sup>2)</sup>	kg	2.250	2.870	4.290	6.050
Product weight	kg	2.120	2.670	4.000	5.700
<b>A</b>	mm	2.046	2.465	2.575	2.829
<b>B</b>	mm	1.311	1.500	1.600	1.700
<b>C</b>	mm	930	800	940	1.280
<b>D</b>	mm	400	420	420	465
<b>E</b>	mm	730	730	900	1.100
Loading volume	m <sup>3</sup>	0.5	0.8	1.0	1.2
Oil flow rate	l/min	140 – 160	160 – 180	180 – 200	300
Max. operating pressure	bar	250	250	250	320

<sup>1)</sup> Weights apply to standard carriers only. Any variances must be agreed with Epiroc and/or the carrier manufacturer prior to attachment.

<sup>2)</sup> Attachment with average-sized adapter plate.

<sup>3)</sup> Drainage line required





**Western Australia:**

☎ +61 8 9248 9800  
📠 +61 8 9209 3697

71 Prestige Parade  
Wangara , Perth  
WA 6065

**Queensland & NT:**

☎ +61 7 3635 7333  
📠 +61 7 3635 7355

76 Dulacca Street  
Acacia Ridge, Brisbane  
QLD 4110

**Victoria:**

☎ +61 3 9308 8202  
📠 +61 3 9308 8872

32 Freight Drive  
Somerton, Melbourne  
VIC 3062

**WWW.BAEG.COM.AU**

sales@baeg.com.au

**United in performance.  
Inspired by innovation.**

Performance unites us, innovation inspires us, and commitment drives us to keep moving forward.

Count on Epiroc to deliver the solutions you need to succeed today and the technology to lead tomorrow.

**epiroc.com**



**PART OF THE ATLAS COPCO GROUP**