

# Excavator attachments

Demolition, recycling and earth-moving.  
Experience our Hydraulic Attachment Tools.



PART OF THE ATLAS COPCO GROUP

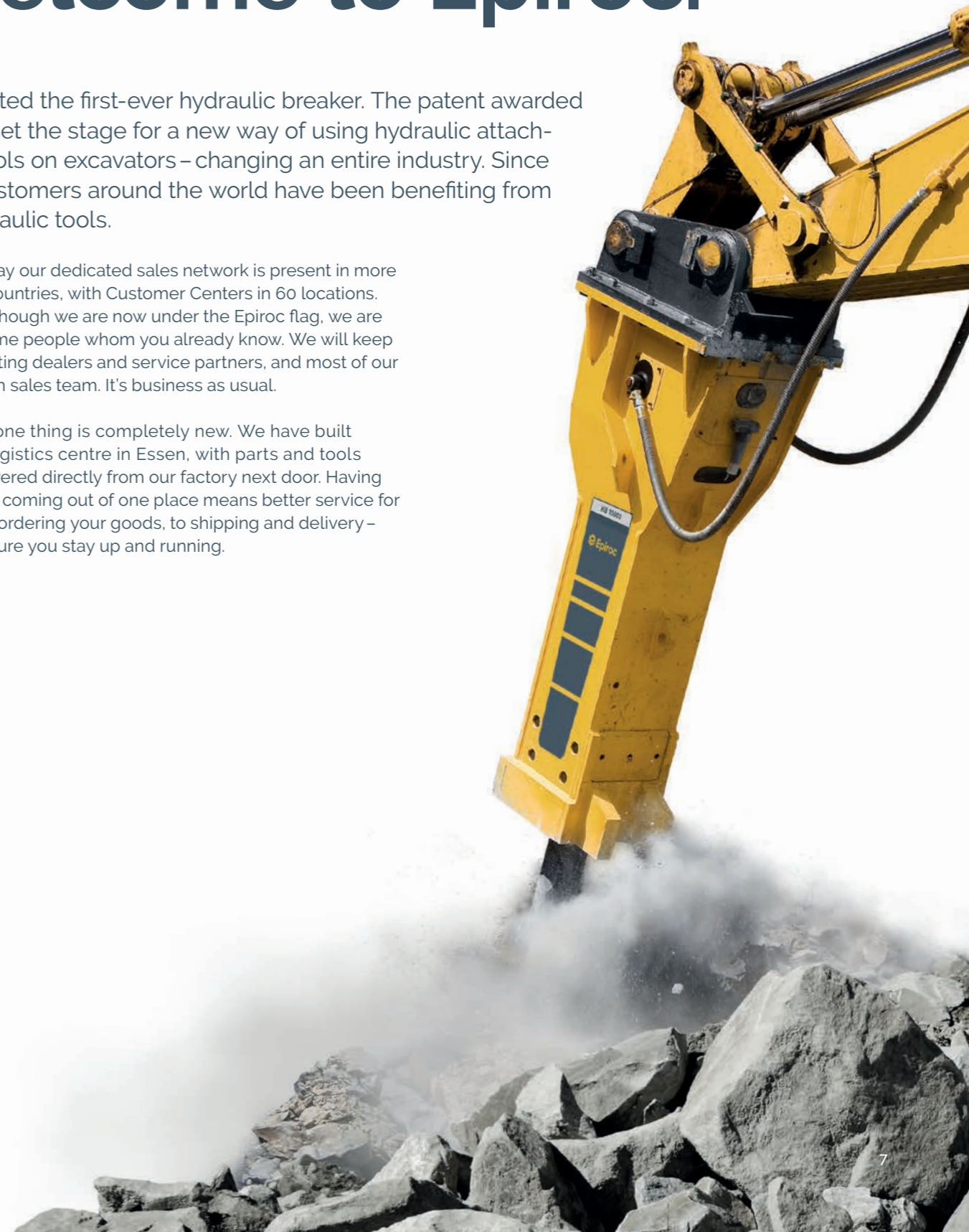


# Time to change the industry. Again. Welcome to Epiroc.

We created the first-ever hydraulic breaker. The patent awarded in 1963 set the stage for a new way of using hydraulic attachment tools on excavators – changing an entire industry. Since then, customers around the world have been benefiting from our hydraulic tools.

In fact, today our dedicated sales network is present in more than 180 countries, with Customer Centers in 60 locations. And even though we are now under the Epiroc flag, we are still the same people whom you already know. We will keep all our existing dealers and service partners, and most of our well-known sales team. It's business as usual.

However, one thing is completely new. We have built our own logistics centre in Essen, with parts and tools being delivered directly from our factory next door. Having everything coming out of one place means better service for you – from ordering your goods, to shipping and delivery – we make sure you stay up and running.



# A solid choice

Solid Body Breakers are perfect for demolishing light concrete structures and asphalt pavements, both outdoors and indoors, performing earthworks, scaling in underground operations, and cleaning ladles and converters in foundries.



**Energy recovery** automatically utilizes the piston recoil energy to reduce vibration levels with the simultaneous increase of performance.

Maintenance-free high-pressure accumulator with a **patented diaphragm support** delivers consistent performance and high reliability.

The optional automatic lubrication systems **ContiLube II micro** (SB 52 – 552) and **ContiLube II** (SB 702 – 1102) optimize the lubrication procedure and reduce maintenance and standstills to a minimum.

The integrated **pressure relief valve** protects against overloads.

**Floating fit tool bushing** with a **patented tool locking system** enables quick and easy on-site replacement.

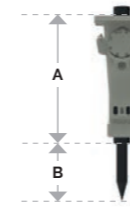
The unique **Solid Body concept** eliminates common parts to enable high durability and a slim, compact, lightweight design.

SB range		SB 52	SB 102	SB 152	SB 202	SB 302	SB 452	SB 552	SB 702	SB 1102
Carrier weight class <sup>1)</sup>	t	0.7 – 11	11 – 3	1.9 – 4.5	2.5 – 6	4.5 – 9	6.5 – 13	9 – 15	10 – 17	13 – 24
Service weight <sup>2)</sup>	kg	55	90	140	200	300	440	520	720	1,060
Tool diameter	mm	40	45	50	65	80	95	100	105	120
Max. hydraulic input power	kW	7	9	11	17	20	25	29	34	40
Oil flow rate	l/min	12 – 27	16 – 35	25 – 45	35 – 65	50 – 80	55 – 100	65 – 115	80 – 120	100 – 135
Operating pressure	bar	100 – 150	100 – 150	100 – 150	100 – 150	100 – 150	100 – 150	100 – 150	120 – 170	130 – 180
Impact rate	bpm	750 – 1,700	750 – 2,300	850 – 1,900	850 – 1,800	600 – 1,400	550 – 1,250	650 – 1,150	600 – 1,050	550 – 850
Sound power level guaranteed <sup>3)</sup>	dB(A)	117	115	114	118	119	122	126	122	123
<b>A</b>	mm	444	571	686	727	807	849	919	1,012	1,166
<b>B</b>	mm	255	265	280	330	400	470	495	520	610

<sup>1)</sup> Weights apply to standard carriers only. Any variances must be agreed with Epiroc and/or the carrier manufacturer prior to attachment.

<sup>2)</sup> Attachment with standard working tool & average-sized adapter plate.

<sup>3)</sup> EN ISO 3744 in accordance with directive 2000/14/EC



The slim and compact design makes the SB range perfect for working in confined spaces such as inside buildings, along walls or in narrow trenches.





**Western Australia:**

📞 +61 8 9248 9800  
📠 +61 8 9209 3697

33-37 Denninup Way  
Malaga, Perth  
WA 6090

**Queensland & NT:**

📞 +61 7 3635 7333  
📠 +61 7 3635 7355

76 Dulacca Street  
Acacia Ridge, Brisbane  
QLD 4110

**WWW.BAEG.COM.AU**

sales@baeg.com.au

**United in performance.  
Inspired by innovation.**

Performance unites us, innovation inspires us, and commitment drives us to keep moving forward.

Count on Epiroc to deliver the solutions you need to succeed today and the technology to lead tomorrow.

**epiroc.com**



**PART OF THE ATLAS COPCO GROUP**